

KOREA  
- KSJS8 -

# 8D SNOW FUN IN KOREA + JEJU SHINHWA WORLD

(Validity: 1 DEC 23 – 10 MAR 24)



## INCHEON / GANGHWADO ISLAND

- Ganghwa Sochang Experience Center (painting experience with sochang cotton)
- Joyangbangjick Café (Included Coffee or Green Tea)
- First Hanok-style cathedral
- Ganghwa Traditional Market

## GYEONGGI-DO / GANGWON-DO

- Everland
- Ski (Equipment and Attire are Included)
- Yongpyong Cable Car

## JEJU ISLAND

- Seongsan Sunrise Peak
- Snoopy Garden
- Jeju Seongeup Folk Village
- Eco Land Theme Park
- Arte Museum
- Dochidol Alpaca Farm
- Moominland Jeju
- Ark Church
- Daepo Jusangjeolli Cliff

## SEOUL

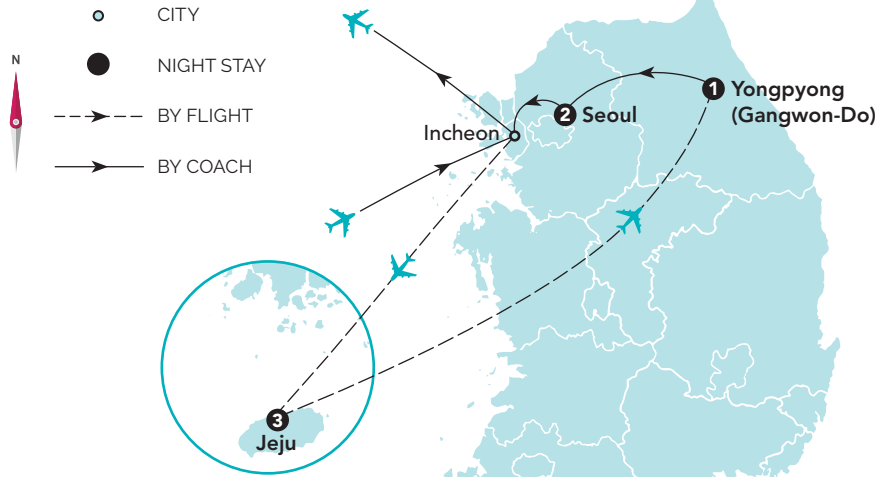
- Korean Taekuk Ginseng Gallery
- Korean cosmetics store
- Myeongdong shopping street
- The Painters Hero Season II
- Healthy Liver Showroom
- DIY Gimhap Experience



6 Breakfasts / 4 Lunches / 4 Dinners



5 Nights 5★ Hotel Stay + 1 Night @  
Ski Resort (Shinhwa World Hotel &  
Resort ASA Exclusive 3 Nights)



KOREA

## DAY 1 SINGAPORE → INCHEON

Assemble at Singapore Changi Airport and begin your holiday with a pleasant flight to Seoul.

## DAY 2 INCHEON - GANGHWA - GIMPO → JEJU

- Lunch: Ganghwa Famous Ginseng Chicken / Dinner: Abalone Hot Stone Bibimbop -

Upon arrival, meet and greet by our local representative. Next, head over to the **Ganghwa Sochang Experience Centre** to paint with sochang cotton. Continue to the first cathedral in **Ganghwado island** and the first in Hanok style in Korea. Visit the former textile factory turned café, **Joyangbangjick Café**, to experience the allure of the retro design. Have fun posing for pictures while enjoying a cup of beverage! Next, can purchase some local fruits in **Ganghwa Traditional Market**. Thereafter, transfer to Gimpo domestic airport.

Note: In the event if due to on Monday, Sochang Experience Center will be replaced by Experience Hanbok Wearing.

## DAY 3 JEJU

- Hotel Breakfast / Lunch: Jeju Black Pork Bulgogi / Dinner: Haemultang -

Today, pay a visit to **Seongsan Sunrise Peak**, a UNESCO World Natural Heritage Site. When viewed from a distance, The Peak resembles a huge, antiquated castle. Volcanic ash that was produced when lava came in contact with the frigid sea morethan 100,000 years ago surrounds its crater. Enjoy the ocean's

expansive view from its highest point.

Next, proceed to **Snoopy Garden**, a park and museum centered around the Peanuts cartoon characters. The indoor Garden House has five halls with five different themes: relationships, everyday life, relaxation, and happiness. 11 outdoor gardens combine Jeju's natural elements. Snoopy Garden where it is a wonderful place to unwind and get some interesting pictures. Thereafter, visit Jeju **Seongeup Folk village**, which restored the 1890s scenes of the village. The Village is the Island's main tourist attraction where customs of the old days can be explored. Jeju offers breathtaking natural beauty that can be appreciated in addition to traditional cultural experiences. Thereafter, will proceed to **Eco Land Theme Park** and board the Forest Train for an eco-adventure there! Baldwin trains that resemble those from the 1800s and are powered by steam run circles around a track in the Gotjawal forest in the park. Walk across an expansive, beautiful flower field. Next, visit contemporary **Arte Museum** is Korea's largest immersive media art exhibition organized by a world-class digital design company d'strict, which is also well-known for the public media art "WAVE", presented at Coex.

## DAY 4 JEJU

- Hotel Breakfast / Lunch: Momguk / Dinner: 5★ Jeju Shinhwa World Cantonese Cuisine -

After breakfast, head to the **Alpaca Farm** for some happy moments where you can get up close and personal with these



SNOW SKIING



DOCHIDOL ALPACA FARM



EVERLAND

adorable animals by participating in a hand-feeding experience session. Next, discovering the **Moominland Jeju**, the biggest Moomin-themed space ever built in Korea. Continue your visit to the **Ark Church**, which was designed by Korean and Japanese architect Jun Itami and winner of the 2010 Korean Architectural Association Award. The structure is a piece of art. The architecture of the church, which is surrounded by lawns, gives the impression that it is floating on the water. Thereafter, visit the beautiful **Daepo Jusangjeolli Cliff** known as 'God's sculpture made by wave and wind at Daepo Coast.

#### DAY 5 JEJU → GIMPO - GYEONGGI-DO - GANGWON-DO

- Hotel Breakfast / Dinner: Korean BBQ Buffet -

After breakfast, visit the seventh most popular theme park in the world, "The Land of Festival" - **Everland (Unlimited Rides Passport Ticket Included)**, offers a day of nonstop entertainment. Experience the Hurricane, Corkscrew, Double Loops, and Amazon Express among its many suspended rides. Visitors can get up close and personal with endangered species on a safari that includes bears, lions, and tigers.

#### DAY 6 GANGWON-DO - SEOUL

- Hotel Breakfast -

A wonderful and thrilling snow experience is in store for today. Do not miss out on this fabulous opportunity to try out skiing. **Snow Skiing** equipment and attire are included (excludes gloves

and goggles) and your guide will guide you through the intricacies of this thrilling winter sport. Take your time to become an expert, or just have fun with the snow. Next, the 7.4km Mt. Balwongsan Cable Car Rides offers the most expansive view of Balwongsan Mountain in Yongpyong and is Asia's longest cable car ride.

Note: In the event if due to bad weather condition, Cable Car will be replaced by Water Park.

#### DAY 7 SEOUL

- Hotel Breakfast / Lunch: Michelin restaurant satisfy Pork Knuckle Set -

After Breakfast proceed to **Korean Ginseng Specialty Store**. The well-known Taiji ginseng and ginseng essence, which are excellent for balancing the body and nourishing qi, might be something you want to buy. Next, take advantage of the discounted prices on Korea-made beauty products at the **Korean Cosmetics Store**. We will keep shopping on **Myeongdong Shopping Street**. The most popular tourist destination in Seoul and a must-visit for foreign visitors has always been Myeongdong. The reason is that Myeongdong is the most well-known shopping and sightseeing destination in Korea, has the highest land price in the country, and can support up to one million floating residents per day. Enjoy **The Painters Hero Season II** is a groundbreaking non-verbal performance that simulates the entire painting process while incorporating stunning visual effects, clever mime, dance, and comedy.

#### DAY 8 SEOUL - INCHEON → SINGAPORE

- Hotel Breakfast -

After breakfast, proceed to **Healthy Liver Showroom**, well known for its health products. Thereafter, take part in a **DIY Gimbap Experience**. Do you watch the Korean drama "Extraordinary Attorney Woo" on Netflix? You can make Gimbap like Woo this time! You will be transferred to the airport for your flight back to Singapore. We hope that you had a memorable vacation with ASA Holidays.

#### Note:

1. In the event of local religious festivals, unforeseen circumstances and/or bad weather conditions, the sequence of the itinerary may be changed or altered. Alternative attractions will be substituted without prior notice and/or at short notice in order to ensure a smoother journey and tour.
2. All bookings will be subject to the terms and conditions stipulated in this brochure.
3. Admission and entrance ticket will be included when specified.
4. Minimum group size of 16 passengers is required for a confirmed departure. Group size of 15 and below will solely be at the discretion of ASA Holidays and passengers need to accept the arrangement.
5. The tour is conducted in Mandarin.
6. All hotel ratings are based on local standards. In the event that accommodation in the stated hotel is unavailable, it will be replaced by another hotel of similar standards.
7. During major events, accommodation may not be in the city mentioned.
8. ASA Holidays recommends that you to buy travel insurance for your trip to ensure coverage.
9. All flights are subject to change without prior notice.
10. In the event of discrepancies between English and Chinese itinerary, please refer to the English version.
11. Room types are based on run of the house and allocated by respective hotels. ASA Holidays will not be responsible for the differences in the room allocated.
12. For groups of 26 passengers and above, we will have a tour manager to accompany the tour throughout.