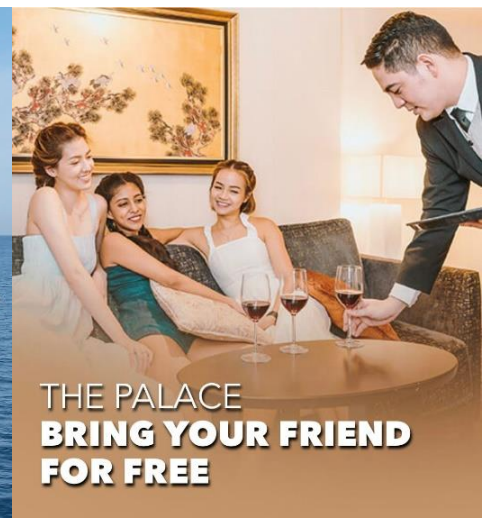




Genting Dream 云顶梦号



THE PALACE
BRING YOUR FRIEND
FOR FREE

3-Night Phuket Cruise BRING YOUR FRIEND for FREE (BFFF)

RWC Promotion valid for booking on/before 30/01/2024, Indicative Rates updated on: 2/11/2023

Dates	Promo Types	Rates are based on per person basis (SGD)					
		Palace Suite (DPS)		Palace Deluxe Suite (DDS)		Palace Deluxe Premium (DDP)	
		1 st Pax	2 nd Pax	1 st Pax	2 nd Pax	1 st Pax	2 nd Pax
26/11/23	Value Fare	\$1,649	\$1,649	\$1,809	\$1,809	\$1,899	\$1,899
10/12/23	Value Fare	\$2,249	\$2,249	\$2,469	\$2,469	\$2,589	\$2,589
24/12/23	Value Fare	\$2,549	\$2,549	NA	NA	NA	NA
7/1/24	BFFFT1	\$1938	FREE	\$2138	FREE	\$2238	FREE
21/1/24	BFFFT1	\$1938	FREE	\$2138	FREE	\$2238	FREE
4/2/24	BFFFT1	\$1938	FREE	\$2138	FREE	\$2238	FREE
18/2/24	BFFFT1	\$1938	FREE	\$2138	FREE	\$2238	FREE
3/3/24	BFFFT1	\$1938	FREE	\$2138	FREE	\$2238	FREE
17/3/24	BFFFT1	\$1938	FREE	\$2138	FREE	\$2238	FREE
31/3/24	BFFFT1	\$1938	FREE	\$2138	FREE	\$2238	FREE
14/4/24	Value Fare	\$1,949	\$1,949	\$2,139	\$2,139	\$2,249	\$2,249
28/4/24	BFFFT1	\$1938	FREE	\$2138	FREE	\$2238	FREE

Bring Your Friend for Free (BFFF)

- Sailing Period: As shown above
 - Adult and child as 3rd and 4th fare at 75% of 1st pax.
 - Infant fare (as 3rd / 4th pax) at 25% of 1st pax
- Booking is subject to cabin availability and capacity control.
- The above fares exclude Port charges, Gratuities, holiday surcharge (where applicable), visa charges (where applicable), Shorex fees and any other incidental charges.
- All other terms and conditions stipulated by RWC apply.
- *Tip: If possible, it is cheaper to book two suites instead of quad sharing in one suite.*

Package Inclusive Of:

PLANET TRAVEL PTE LTD

Add: 926 Yishun Central 1, #01-175, Singapore 760926

Tel: +65 6286 9009 WhatsApp: +65 9126 5925 Email: sales1@planettravel.com.sg Web: www.planettravel.com.sg

- Cabin Fare onboard Genting Dream

Package Not Inclusive Of:

- Port charges at S\$75 per person to be paid upon booking.
- Gratuities (applicable to 2 yrs. and above): \$26 per person per night.

This suite caters to your every need and will provide maximum comfort. This luxurious room offers an impressive view of the ocean and comes with its privileges, including:

1. 24-hour butler concierge service
2. Standard Wi-Fi package
3. Exclusive access to the Palace Restaurant with complimentary dining
4. Set meal entitlements at designated speciality dining restaurants.
5. Happy Hour with complimentary drinks such as selected wines, beers, spirits, and non-alcoholic beverages at selected venues
6. Priority access to live production shows

Itinerary:

Day 1 (Sun) Embarkation Day

- 7:00 pm The ship departs from [Marina Bay Cruise Centre Singapore](#)

Day 2 (Mon) Kuala Lumpur

- 7:00 am Ship arrives at Kuala Lumpur **(for technical call only)**
- 11:00 am Ship departs at Kuala Lumpur

Day 3 (Tue) Phuket

- 7:00 am (6 am) Ship arrives at Phuket - Deep Sea Port
- 3.00 pm (2 pm) Ship departs from Phuket - Deep Sea Port

Day 4 (Wed) Disembarkation Day

- 6:00 pm Ship arrives at [Marina Bay Cruise Centre Singapore](#)

Eligibility:

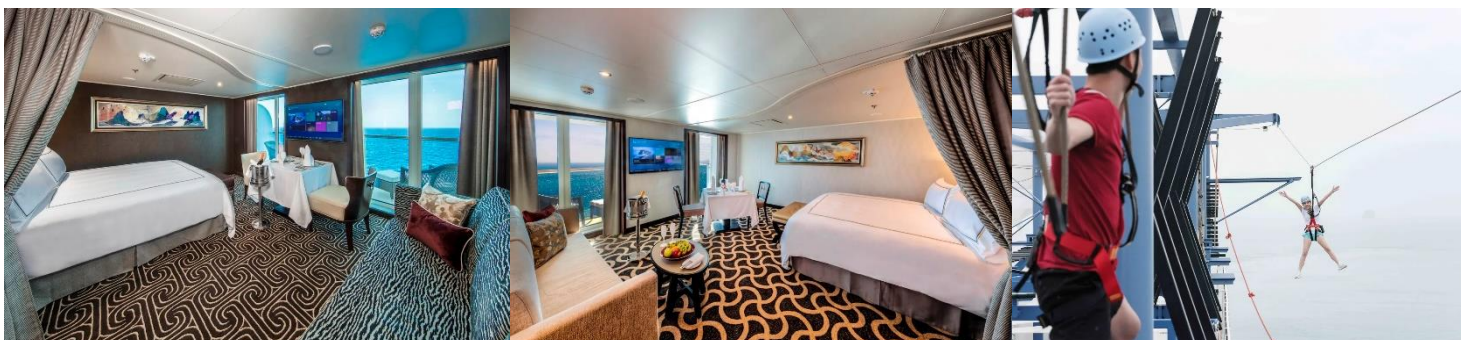
- Important: Infants and children must be included in the passenger headcount.

Important Information to note:

- Each stateroom must have at least one passenger who is age 18+.
- Age of Infant: 6 months to less than 2 years old. Infants must be at least 6 months old on the date of sailing to be allowed to board.

Remark:

- Rates are quoted on a per-person basis and are subject to change.



PLANET TRAVEL PTE LTD

Add: 926 Yishun Central 1, #01-175, Singapore 760926

Tel: +65 6286 9009 **WhatsApp:** +65 9126 5925 **Email:** sales1@planettravel.com.sg **Web:** www.planettravel.com.sg