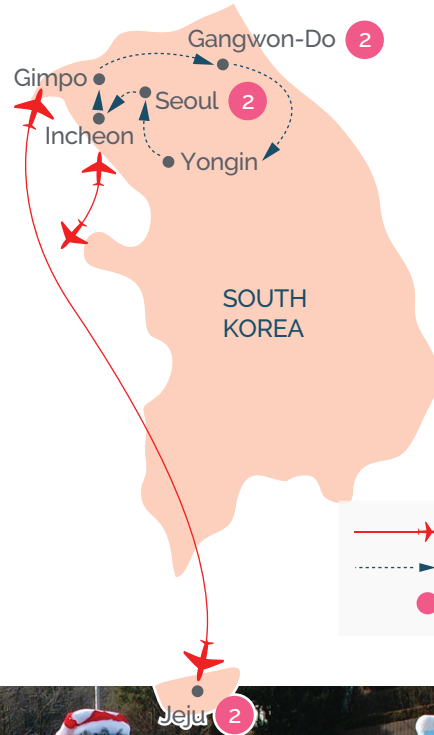


8D Let's Go Korea Winter Wonderland + Jeju



HIGHLIGHTS

- **Incheon** - Songwol-dong Fairy Tale Village, Incheon's Chinatown.
- **Jeju** - Seongsan Sunrise Peak, Submarine, Tangerine Farm, Seongeup Folk Museum, Snoopy Garden, Teseum Safari Museum + DIY Teddy Bear's personalized costume, Dongmun Wet Market.
- **Gangwon-Do** - Nami Island, Ski Equipment & Attire.
- **Gyeonggi-Do** - Pinnocchio & Da Vinci theme park, Premium Factory Outlets, Everland.
- **Seoul** - Gyeongbok Palace, Lotte World Adventure Park, Dongdaemun Market, Hongik University Street, Korean Cosmetics Showroom, Korean Ginseng Showroom, Healthy Liver Showroom.



6 Breakfasts | 4 Lunches | 4 Dinners



4 & 5 Stars



L.G.E Travel Pte Ltd 全球之星

📍 101 Upper Cross Street People's Park Centre, #B1- 17B Singapore 058357

☎ +65 6223 3661 ✉ info@lge.com.sg 🌐 www.lge.com.sg

Let's Go Everywhere



Songwol-dong Fairy Tale Village

Day 01

Singapore > Incheon

- Assemble at Singapore Changi Airport for your flight to capital city of **Korea**.

Day 02

Incheon - Gimpo - Jeju

Meals on board | Jajangmyeon + Sweet & Sour Pork Lunch | Hanjeongsik Dinner

- Upon arrival, meet and greet by our local representative.
- **Songwol-dong Fairy Tale Village** - Which is filled wonderful theme of the village by decorating classic fairy tales all around.
- **Incheon's Chinatown** - Came into being with the opening of Incheon Port in 1883 and Incheon's designation as an extraterritoriality of the Ching Dynasty in the following year. In the past, the area held many stores and trading goods imported from China. But currently most Chinese businesses in the area are restaurants.
- **Hyundai Premium Outlet** - Where you can get a wide range of discounted branded merchandise at affordable prices.
- Transfer to Gimpo Airport for flight to Jeju.



Snoopy Garden

Day 03

Jeju

Hotel Breakfast | Black Pork Bulgogi Lunch | Seafood Sashimi Set Dinner

- **Seongsan Sunrise Peak** - The Peak resembles a great ancient castle when seen from a distance. Its crater is surrounded by the volcanic ashes that were created when lava touched the cold sea more than 100,000 years ago. At its peak, be swept away by the panoramic view of the Ocean.
- **Submarine** (*subject to weather conditions*) - Submerge into the ocean to marvel at the interesting marine life, from the glass window.
- **Tangerine Farm** - Where you can experience picking and tasting the tangerine (*subject to seasonal conditions*).
- **Seongeup Folk Village** - Which has restored scenes of the village to that of the 1890s. The Village is the island's main tourist attraction where customs of the old days can be explored. You can admire the amazing scenic beauty of Jeju and experience the traditional culture.
- **Snoopy Garden** - It is a museum and park based around the characters from the cartoon Peanuts. The indoor Garden House has five halls with the themes of relationships, daily life, relaxation, happiness, and dreams. Outdoor, the park's 11 gardens blend into Jeju's natural features. A visit to Snoopy Garden is a great opportunity to relax and take some unique photos.
- **Teseum Safari Museum + DIY Teddy Bear's personalized costume** (*include Teddy Bear Doll*) - It is one of the first museums in the world to exhibit all sorts of teddy bears and stitched dolls including ones shaped like wildlife animals, marine animals, flowers, birds, and more.
- **Dongmun Market** - Where you can find seafood, local product, fruits etc. You can experience full of Korean culture and atmosphere at the market.



Snow Activities

Day 04

Jeju - Gimpo - Gangwon-Do Region

Hotel Breakfast | Chicken on hotplate Lunch

- Transfer from Jeju Airport for flight to Gimpo.
- **Nami Island** - this island is the location where many scenes from the famous drama, Winter Sonata, were shot. Stroll along the beautiful Road of Redwood filled with chestnut trees, authentic cottages and a beautiful lake.
- **Pinocchio & Da Vinci theme park** - Where you can enjoy the Geppetto alley, from da Vinci square. On the wind terrace, under the Pinocchio clock tower, where you enjoy Italian sceneries.

Day 05

Gangwon-Do Region

Hotel Breakfast / Gamjatang Dinner

- **Snow Activities** - Today, a wondrous and exhilarating snow experience awaits. Do not miss out on this fabulous opportunity to try out skiing. Snow skiing equipment and attire are included (*excludes gloves and goggles*) and your guide will guide you through the finer points of this exciting winter sport. Take your time to master the strokes, or simply play with the snow. Thereafter, you will take the Gondola rides, enjoy a cup of coffee (*own expenses*) and indulge in the snowy view of the Mountain.

Day 06

Gangwon-Do Region - Yongin - Seoul

Hotel Breakfast | Korean BBQ Dinner

- **Everland** (*include passport ticket*) - The world's 7th most visited theme park. Experience its wide array of suspended rides like the Hurricane, Corkscrew, Double Loops, and the Amazon Express. A safari of animals such as bears, lions and tigers give visitors a chance to get close to the endangered species.
- **Dongdaemun Market** - A great shopping paradise where traditional open-air markets stand alongside modern shopping malls with fashionable clothing and accessories selling at inexpensive prices.

Day 07

Seoul

Hotel Breakfast | Ginseng Chicken Soup Michelin Recommended Lunch

- **Gyeongbok Palace** - Take a walk around the palace built in AD 1394 during the Chosun Dynasty.
- **Ginseng Showroom** - Which showcase various types of Koreans ginseng, the unique way of growing it is inherited from the olden days. You can also purchase good quality ginseng at the showroom.
- **Local Cosmetic Shop** - You will learn how to care for your skin and buy cosmetics made in South Korea at affordable price.
- **Lotte World Adventure Park** (*Unlimited Rides Passport Ticket included*) - Within this mega-complex lies an international hotel, departmental store, duty-free shops, sports complex, and a skating rink. Lotte World offers enjoyment of every kind with something to offer for everyone such as getting to meet Lotte and friends.

Note: A levy of USD150 will be collected from each passenger who leaves the Seoul City tour group.



Everland Safari

Day 08

Seoul > Singapore

Hotel Breakfast

- **Liver Showroom** - Well-known for its health products such as cordyceps and huganbao miracle tonic.
- **Hongik University Street** - A vibrant and youthful street. It is popular for music, street art, galleries, cafes, and fashionable shops.
- Bid farewell to this beautiful country before transferring to the airport for the flight home.

Service Fee

Total 75 USD

REMARKS

1. A minimum group size of 12 passengers is required for a confirmed departure. Group size of 11 and below will solely be at the discretion of LGE Travel and passengers need to accept the arrangement.
2. The sequence of the itinerary, flight schedules and hotels are subject to change without prior notice in the event of unforeseen circumstances.
3. During major events, accommodation may be re-located to another city without prior notice.
4. In the event that a place of visit is fully booked or closed due to public engagement or bad weather conditions, it will be replaced with an alternative.
5. All guides are Chinese speaking, if a English guide is required, additional charges may applies.
6. Should there be any discrepancies over the English and Chinese Version of the Itinerary, we shall follow accordingly to the English Version.
7. We, as a Travel Agent shall not be held responsible in the event of a flight delay which can lead to disruptions in the itinerary.
8. Tour Fare does not Include All Airport Taxes, Fuel Surcharges, Visa Application Fees, Tipping, Porterage and all expenses of a Personal Nature.
9. For groups of 20 passengers and above, we will have a tour manager to accompany the tour throughout.



Contact Our
Specialist Today

+65 6223 3661

Let's
Go  Europe™ Let's Go  Everywhere 

CONNECT WITH

LGE TRAVEL PTE. LTD.

101 Upper Cross Street,
People's Park Centre #B1-17B
Singapore 058357.

E : info@lge.com.sg

W : lge.com.sg

 LGE Travel  LGE Travel