

8D 6/7N SCENIC KOREA JEOLLANAMDO

Jeonju / Naejangsan / Suncheon / Damyang / Suwon / Seoul

Validity Period: April 2023 - March 2024

KR8JEO



Tour Highlights

SEASONAL BONUS (subject to weather condition):
End-October till Mid-November'23 – Maple leaves viewing at Naejangsan

- **JEONJU** - Beartree Park, Korean Paper Doll DIY Jeonju Hanok Village + Hanbok Experience
- **JEOLLANAM-DO** - Naejangsan National Park, Baekyangsan Temple, Jirisan Hotspring (hotspring bath), Boseong Green Tea Plantation, Damyang Bamboo Forest (Juknokwon), Damyang Metasequoia-lined Road, Mudeungsan National Park, Yangnim History & Cultural Village
- **SUWON** - OOOZOOO Starlight Garden, Korean Folk Village, Gwangmyeong Cave
- **SEOUL** - Gyeongbokgung, Bukchon Hanok Village, Dongdaemun, Gwangjang Market, Sinchon Fashion Street

SPECIAL MEALS: Jeonju Traditional Hanjeonsik, Mushroom Steamboat, Army Stew, Damyang Tteokgalbi + Bamboo Rice, Michelin Ginseng Chicken Soup

Day 1

SINGAPORE → INCHEON
 Meals on Board

- Check in at Singapore Changi Airport for your flight to Seoul - The Land of Morning Calm.

Note: For SQ600 0800-1535 flight arrival Incheon transfer for dinner. transfer for dinner.

Accommodation: Incheon Sopra Hotel or similar

Day 2

INCHEON – JEONJU
 Lunch, Dinner

- **Beartree Park** - It is a beautiful natural space in Chungcheongnam that is built to honor the Manchurian Black Bear and the delicate between men and nature.
- **Korean Paper Doll DIY** - DIY your own Korean paper doll.
- **Jeonju Hanok Village + Hanbok Experience** - There are more than 800 traditional Korean hanok houses here and they are top off with its beautiful unique roof. As compared to other industrialized cities, this village still retains its historical charms and traditions.

Note: Hanbok experience not available during Jun - Aug & Nov - Feb

Accommodation: Jeonju Ramada Hotel or similar

Meals

6 Breakfasts | 6 Lunches | 5 Dinners

Accommodation

4 + 5 ★



📍 Naejangsan National Park (autumn)



📍 Beartree Park

Day 5

GWANGJU – SUWON

Breakfast, Lunch, Dinner

- **Mudeungsan National Park** - Known for its beauty throughout the year. The autumn leaves of Gyubongam Hermitage and silver grass of Baengma Ridge are quite spectacular. In the winter, snow and ice on the mountain create exquisite scenery.
- **Yangnim History & Cultural Village** - There are pottery and leather workshops in every nook and cranny and the old-tiled houses are elegantly decorated, attracting many artists. The village is being transformed into an art gallery.
- **OOOZOO Starlight Garden** - It is a beautiful garden decorated with stunning starlight and illumination. This light-themed park includes many sections with different themes. Make sure you have prepared your camera and take good pictures with your friends and family!

Accommodation: Suwon Value Hotel or similar



📍 Naejangsan National Park

Day 3

JEONJU – NAEJANGSAN – SUNCHEON

Breakfast, Lunch, Dinner

- **Naejangsan National Park** - Famed as one of the best mountains for its autumn foliage.
- **Baekyangsa Temple** - Another great photo spot for autumn foliage tours, check out this great spot in Naejangsan.
- **Jirisan Hotspring (Hotspring Bath)** - After a day of hiking along Naejangsan, indulged Jirisan Hot Spring in many facilities including hot spring bath, Jjimjilbang and many more!

Accommodation: Suncheon Booyoung Hotel or similar

Day 4

SUNCHEON – BOSEONG – DAMYANG – GWANGJU

Breakfast, Lunch, Dinner

- **Boseong Green Tea Plantation** - Boseong has one of the largest productions of green tea in South Korea.
- **Damyang Bamboo Forest (Juknokwon)** - A bamboo forest cultivated by the town of Damyang. This bamboo forest is approximately 160,000m² in size.
- **Damyang Metasequoia-lined Road** - A beautiful and exotic boulevard that looks like it came straight out of a fairytale.

Accommodation: Gwangju U Top Boutique Hotel or similar

Day 6

SUWON – SEOUL

Breakfast, Lunch, Dinner

- **Korean Folk Village** - It is a place to learn and know more about ancient Korea.
- **Gwangmyeong Cave** - The best cave theme park in Korea, is a mysterious space created by incorporating elements of culture and art into the mines that used to mine gold, silver, copper and other minerals.
- **Gwangjang Market** - Try out authentic Korean street food here!

Accommodation: Seoul Yongsan Novotel Ambassador Hotel or similar



Damyang Bamboo Forest

Day 7

SEOUL

Breakfast, Lunch

- **Gyeongbokgung** - The perfect way to enjoy the majestic Chosun Dynasty Palace. One of the most beautiful & largest palaces in Seoul.
- **Bukchon Hanok Village** - It is the home of hundreds of traditional houses, called hanok, that date back to the Joseon dynasty.
- **Ginseng Showroom**
- **Local Cosmetic Shop**
- **Duty Free Shop**
- **Dongdaemun Market** - Popular Shopping District!

Accommodation: Seoul Yongsan Novotel Ambassador Hotel or similar



Mudeungsan National Park

Day 8

SEOUL - INCHEON ✈ SINGAPORE

Breakfast, Meal onboard

- **Korea Healthy Liver Centre**
- **Local Provision Shop** - Shop for some local products before transfer to Incheon airport for our flight back to Singapore.

We hope you enjoyed your trip to Korea with Nam Ho Travel!

NOTES

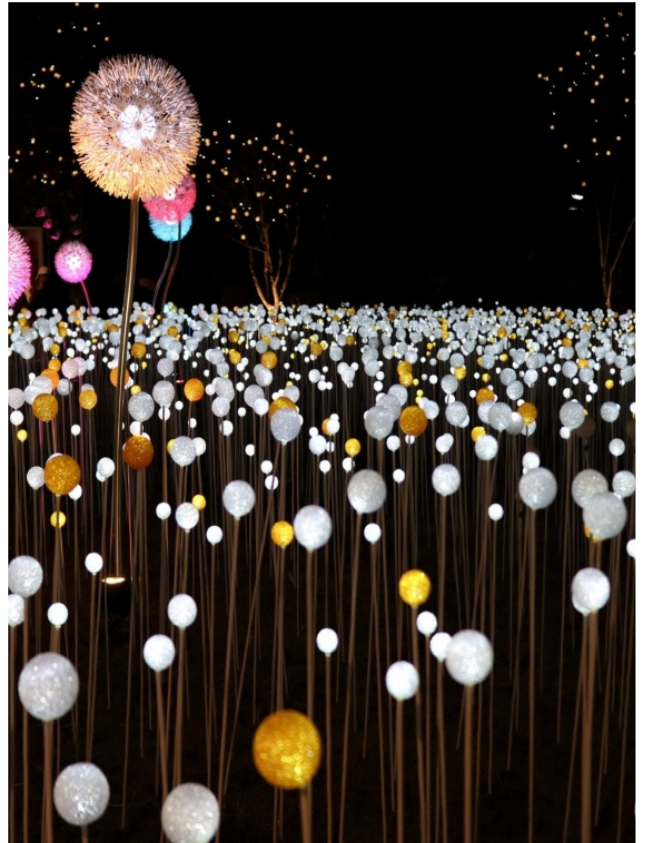
- Min. group size for confirmed departure: 10 pax
- Tour is conducted in Mandarin
- The sequence of the itinerary, flight schedules and hotels are subject to change without prior notice in the event of unforeseen circumstances
- Accommodations are based on the local star rating
- Activities are subjected to weather conditions
- During major events, accommodation may be relocated to outside of the city or in another city without prior notice.
- K-ETA application and Q code application by passenger. (Travel agency apply K-ETA will be charge S\$24 per person).
- Strictly no deviation from tour. Any passenger who deviates from this will be subjected to a levy of USD\$150.

Tipping Guidelines

Guide and driver – USD\$35(6N) / USD\$40 (7N)

(can be paid in KRW equivalent)

Tour leader (if any) S\$40 per person including children.



OOOZOOO Starlight Garden