



8D6N KOREA SKI FUN WITH BUSAN



 **Address**
12 Woodlands Square, Woods Square Tower 1,
#11-78, Singapore 737715

 **Email**
enquiry@dreamcation.com.sg

 **Call Us**
+65 6513 2627

 **Telegram**
t.me/dreamcationsg

 **WhatsApp Us**
+65 3129 6887

  **Follow Us**
@dreamcationcruisesandtours



KOREA HIGH SPEED TRAIN (KTX)



SONGDO CABLE CAR



PAINTER HERO SHOW



HIGHLIGHTS

- Local 4 stars hotel
- Muslim Friendly Meals
- Onboard Korea High Speed Train (KTX) to Busan
- 2 Nights Ski Resort Stay
- Korea Largest Indoor Theme Park – Lotte World
- Korea Famous innovative non-verbal performance – The Painter: Hero
- Hanbok Wearing Experience



ACCOMMODATIONS

- 1N in Busan - Solaria Nishitetsu Hotel or similar class
- 1N in Daegu - Inter Burgo Exco or similar class
- 2N in Pyeongchang - High One Resort or similar class
- 2N in Seoul - Center Mark Insadong or similar class

DAY 1 SINGAPORE > INCHEON

DAY 2 INCHEON – BUSAN* (- / LUNCH / DINNER)

- Upon arrival Incheon Airport, transfer to Seoul Station for **KTX Train** to Busan
- **Songdo Cable Car**, also known as Busan Air Cruise which you can enjoy the magnificent view of Songdo Coast Line
- **Gamcheon Cultural Village**, the famous Instagramable spot in Busan
- **Jagalchi Market**, biggest seafood market in Busan where you able to see various type of fresh seafood.
- **BIFF Square**, famous landmark in Busan with featuring not only movie theaters but also shops and leisure facilities, attracting growing numbers of young visitors and tourists.

**for Vietnam Airlines*

- Flight arrival Busan Airport (without KTX Train)

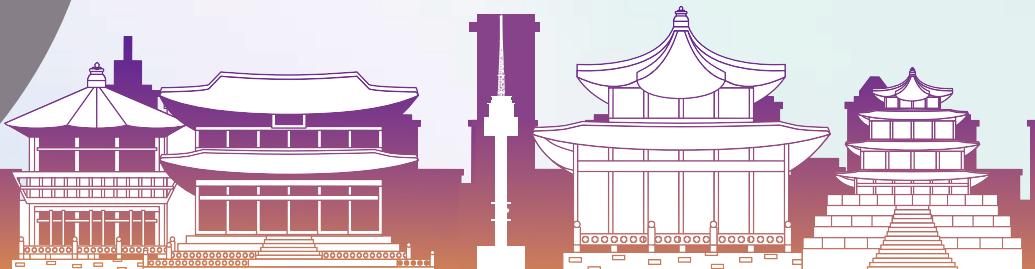
DAY 3 BUSAN - DAEGU (BREAKFAST / LUNCH / DINNER)

- **Huinnyeoul Cultural Village**, where you can see colorful murals and buildings while walking along the blue ocean of Busan.
- **Painter Hero Show**, an innovative non-verbal performance that stages the entire process of painting combined with incredible visual effects and a witty blend of mime, dance and comedy.
- **Seomun Market**, the largest traditional street market in Daegu, South Korea, containing more than 4,000 shops.
- **Dongseongno Street**, the busiest shopping street in Daegu, full of the lively spirit of youth throughout the year.



Gamcheon Village

Huinnyeoul Cultural Village





Lotte World Theme Park

DAY 4

DAEGU – PYEONGCHANG

(BREAKFAST / LUNCH / DINNER)

- Creating Your Own Skincare Products with Naturally Derived Medicinal Herbs at **SkyLake** [include K-medicine Essence & Toner DIY]
- **Andong Mask Village**, surrounded by the Nakdonggang River, the village is home to descendants of the Ryu clan of Pungsan, which still makes up 70 percent of the villagers.
- **Samtan Art Mine**, an art complex transformed from an abandoned mine. After being used as a coal mine for 40 years, the mine turned into an art complex in 2001.

DAY 5

PYEONGCHANG

(BREAKFAST / - / DINNER)

- Enjoy your Ski Day on the land was elected and host for the 2018 Winter Olympic. [Ski Equipment Rental by own expenses]



DAY 6

PYEONGCHANG – SEOUL

(BREAKFAST / LUNCH / DINNER)

- **Byeolmadang Library**, one of the gigantic library in Korea which has a 2,800-square meter space and has become one of the most Intragramable spot in Seoul.
- **Lotte World Theme Park**, the biggest indoor theme park in South Korea which divided into the indoor Lotte World Adventure, and the outdoor lakeside Magic Island, with additional amenities including a shopping mall, folk museum, ice rink, hotel, and more. [include entrance]

DAY 7

SEOUL

(BREAKFAST / LUNCH / -)

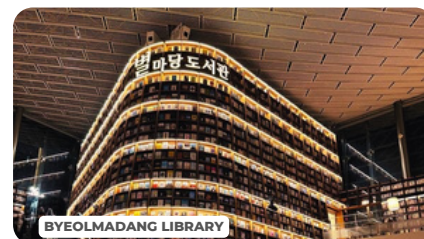
- Visit the biggest palace in Seoul city, the **Gyeongbok Palace** with wearing Korean traditional costume **Hanbok** [include Hanbok & entrance]
- Make a stop at the Korea products which famous in the World: **Ginseng Outlet & Cosmetic Duty Free**
- Shop till you drop at Seoul famous shopping district: **Itaewon & Myeongdong**
- **Seoul International Mosque**, the first Mosque built in South Korea

DAY 8

SEOUL

(BREAKFAST / - / -)

- Drop by Red Pine Tree Products shop
- Transfer to airport



Note: To arrange smooth running of tour, the sequence of itinerary might need to be changed by any unexpected circumstance of weather condition and others unforeseen situation. Travelers are responsible to ensure that all travel documents and visas are in order prior to departure from their home country. Cancellation & Changes fee applied subject to terms & conditions.

Excluded:

- Tipping for Tour Leader, Tour Guide & Driver: KRW 9,000 per customer per day.
- Pre-Departure & Post-Arrival COVID-19 test, Visa application fee (if have any).
- Other optional tour arrangement which not stated in the itinerary.
- Item of personal expenses.

