



**Switzerland.**  
by train, bus and boat.

T1D8N

ECSTTW | Winter Nov 2023 – Mar 2024

# GRAND TRAIN TOUR OF SWITZERLAND

## COUNTRY FOCUSED



All aboard for one of the world's most beautiful journeys which merges train, boat, and bus rides into one breathtaking route. The trip takes you to the most delightful Swiss cities, through picturesque alpine resorts, and to numerous sights and landmarks.



GLACIER EXPRESS NEAR ANDERMATT IN WINTER

SCAN FOR DIGITAL COPY



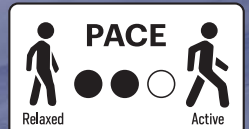
Itinerary  
recommended by  
**Switzerland Tourism.**



Wifi Router



Whisper System



Relaxed

Active



# HIGHLIGHTS

## ZÜRICH

- Old Town
- St Peter Church
- Münsterbrücke Bridge
- Fraumünster Cathedral
- Grossmünster Cathedral
- Swiss National Museum

## LUCERNE

- Old Chapel Bridge
- Old Town
- Lion Monument
- Glacier Garden
- Lake Lucerne Boat Ride

## MT RIGI

- Cogwheel Train Ride

## MT BUSSALP

- Sledging Activity

## MONTREUX

- Chillon Castle
- Lake Geneva

## ZERMATT

- Cogwheel Train Ride
- Gornergrat 3100m
- Riffelsee Lake
- Matterhorn Museum

## BRIG

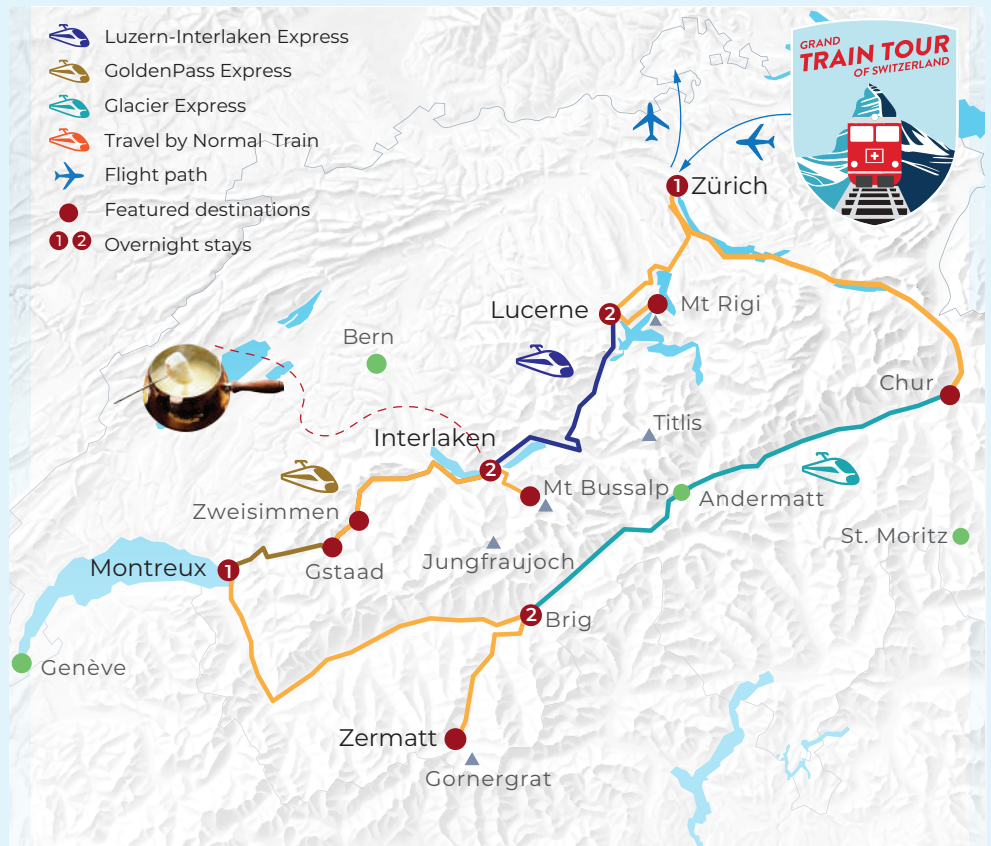
- Old Town
- Stockalper Palace
- Glacier Express Ride

## CHUR

- Old Town

# EXCLUSIVES

- Panorama Train Ride on Luzern-Interlaken Express, GoldenPass Express and Glacier Express
- Sledging on the Longest Sledge Run – Mt Bussalp
- Mountain Excursions: Rigi, Gornergrat
- Hotel to Hotel Portorage



# DELICACIES

**Meal Plan**  
8 Breakfasts, 4 Dinners

**Specialities**  
• Cordon Bleu  
• Swiss Fondue

# 4★ HOTELS

**LUCERNE** Astoria  
**INTERLAKEN** Du Nord  
**MONTREUX** Royal Plaza  
**BRIG** Stockalperhof  
**ZURICH** Movenpick Airport

\*Note: Hotels subject to final confirmation. Should there be changes, customers will be offered accommodation similar to this list.





## 01 HOME ▶ ZÜRICH

Meals on Board

Assemble at the airport and depart for **Zürich**, the financial metropolis of Switzerland.

## 02 ZÜRICH ▶ LUCERNE

Set off on sightseeing tour, stroll through the medieval **Old Town** and see the Zürich oldest parish church - **St Peter Church**. Walk over the historic **Münsterbrücke**, the bridge which connects the **Fraumünster Cathedral** to the **Grossmünster Cathedral**. Next visit the **Swiss National Museum**, which shows Swiss History from its beginnings to present day. Afterwards, continue to **Lucerne** for overnight.

## 03 LUCERNE ▶ MT. RIGI

Breakfast, Dinner - Cordon Bleu  
Begin with a train ride to **Vitznau**, from here hop on a **cogwheel train** will take you up to **Rigi Kulm**, 1798m above sea level. The majestic panoramic view on the top of **Mount Rigi** - the Queen of the Mountains is an absolute. Thereafter, enjoy a **scenic cruise** over the sparkling lake back to Lucerne. Time to explore Lucerne's **Old Town**. View the sandstone **Lion Monument** commemorating the Swiss Guards. Stroll over **Chapel Bridge**, a 17th-century covered footbridge, for views of Lake Lucerne and the Alps. Lastly visit to **Glacier Garden**, where you can learn all about the geological history of Lucerne and its surrounding.

## 04 LUCERNE ▶ MT BUSSALP ▶ INTERLAKEN

Scenic ride: **Luzern-Interlaken Express**

Breakfast, Dinner - Swiss Fondue  
Set off on your panoramic journey on the **Luzern - Interlaken Express**, which connects two world-famous destinations. Bask in the incredible panoramas of the mountain scenery, beautiful lakes and thundering waterfalls that adorn the countryside along the way. En-route to **Grindelwald**, you will board a snow bus up to the sun terrace **Mt Bussalp** with its wondrous panoramic view from 1800m. Here you go! Enjoy splendid views of the Jungfrau's snowy peaks as you sledge on the 7.6km long sledge run, the longest in Europe. As night falls, enjoy a 4-course Swiss fondue combo dinner at the Swiss-themed **Bebbis Restaurant**.

Note: In case of unfavorable weather conditions, the sledding activities may be replaced with a visit to Grindelwald First / Pilatus / Harder Kulm.

## 05 INTERLAKEN

Breakfast

Enjoy the free day exploring the beautiful surrounding mountain region at your own leisure. You may consider for a truly breathtaking experience, we recommend optional for a ride on Jungfrau Railways to **Kleine Scheidegg**, where you can take in the scenic valleys and **Glacier Falls**.  
*Optional: Kleine Scheidegg*

## 06 INTERLAKEN ▶ GSTAAD ▶ MONTREUX

Scenic ride: **GoldenPass Express**  
Breakfast, Dinner - Seafood Pasta with Wine

Set off from Interlaken as you travel along Lake Thun and pass through the Simmental Valley to **Gstaad**. Take a brief wander at this glitzy resort village before boarding the **GoldenPass Express**. This well-known panoramic train whizzes past a beautiful cluster of rivers, clear mountain lakes and waterfalls in Switzerland. The trip comes to an end when the train arrives in **Montreux**.

Remark: Special visit to Montreux Christmas Market, open from 23 Nov to 23 Dec 2023.

## 07 MONTREUX ▶ BRIG

Breakfast, Dinner

Take a visit to **Chillon Castle**, a splendid medieval fortress on Lake Geneva. Next you will reach the lovely town of **Brig** with its historic old quarter and see the **Stockalper Palace**, which was built in the 17th century. Consider an optional experience to Aletsch

Glacier, the largest and longest glacier, lying in the Bernese Alps of south-central Switzerland.

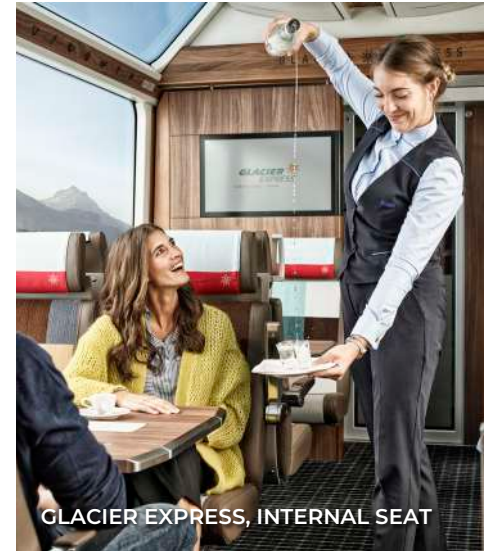
Note: Chillon Castle is closed on every Monday, 25th Dec & 1st Jan.

*Optional: Aletsch Glacier*

## 08 BRIG ▶ ZERMATT ▶ BRIG

Breakfast

Today's excursion begins with a trip to **Gornergrat** in Zermatt. You will board Europe's highest open-air cogwheel railway up to 3100m above sea level. Take in spectacular panoramic views of the **Matterhorn**. Return to **Zermatt town** for a short orientation tour before visit to the **Matterhorn Museum**, where you'll learn about the history of alpine life and mountain climbing.



GLACIER EXPRESS, INTERNAL SEAT



SCENIC CRUISE ON LAKE LUCERNE



# 11D8N Grand Train Tour of Switzerland



LUCERNE-INTERLAKEN EXPRESS, LAKE LUNGERN



FRAUMUNSTER CHURCH, ZURICH



COGWHEEL TRAIN TO MT RIGI

## 09 BRIG ▶ CHUR ▶ ZURICH

Scenic ride: **Glacier Express**

Breakfast

Board the **Glacier Express**, a famed train with cars specially designed for scenic viewing. Feast your eyes upon the phenomenal sight of the **Oberalp Pass** and **Rhine Gorge** before arriving at **Chur**. Set out on a short walk in this oldest and car-free mountain city in the heart of the Alps. Chur exudes a romantic charm through its lovely squares and corners, winding streets, alleys, and a lot of history. Journey to Zurich for the night.

Note: There will be no Glacier Express trains operating between 15 Oct - 10 Dec 2023. It will be replaced with old town of Bern instead Chur.

## 10 ZURICH ▶ HOME

Breakfast

Enjoy the rest of the day at leisure till it is time to transfer to the airport for your flight home.

## 11 HOME SWEET HOME

We hope you enjoyed your vacation with our company and we look forward to seeing you again for your next trip.

### Suggested Excursions:

Additional activities that complement your holidays will be at your own discretion and is entirely optional.

\*Minimum group size may apply.

- Kleine Scheidegg: CHF139 / CHF119
- Aletsch Glacier: CHF149 / CHF109

### Service Fee Guideline:

(based on 11D8N)

- CHF88 per person

### Notes:

- A minimum group size of 15 passengers is required for a confirmed departure.
- The sequence of the itinerary, flight schedules and hotels are subject to change without prior notice in the event of unforeseen circumstances.
- Mountain activities are subject to weather conditions.
- During major events, accommodation may be re-located to outside of the city or in another city without prior notice.
- If specific scenic trains are not available, not operating or under maintenance, it will be replaced with normal train services.
- No portorage service/transfer service will be provided on the arrival/departure day.
- Portorage luggage is limited to one piece per person.