



2023
**WINTER
SERIES**



9D7N
**WINTER LUXURY
GOURMET & ONSEN
IN KYUSHU**

Places of visit

- Saga 佐賀
- Nagasaki 長崎
- Unzen 雲仙
- Kumamoto 熊本
- Kagoshima 鹿児島
- Ibusuki 指宿
- Kirishima 霧島
- Miyazaki 宮崎
- Nango 南郷
- Hyuga 日向
- Takachiho 高千穂
- Beppu 別府
- Oita 大分
- Fukuoka 福岡



Udojingu Shrine



Black Pork Kurobuta (Image only)



Hitsumabushi (Image only)



Saga Beef (Image only)



Kaiseki Dinner (Image only)

EARLY BIRD DISCOUNT
First 10 customers
S\$150 off
per person

17 Dec 2023
From **s\$5,888***

10 Feb 2024 福 *CNY*
From **s\$5,688***
Est. Tax & Fuel Surcharge: \$140

ENGLISH GUIDED TOUR

Our **wow!** Promises

1. Organised and well-paced itinerary
2. Small group size for quality travel
3. Comfortable big coaches
4. Experienced English speaking guide accompanying the entire tour
5. Authentic Japanese gourmet & cultural experiences
6. Premium selection of hotels and ryokans (with onsen)

citi Additional Discount
Exclusive to Citibank Card Members
S\$50 OFF per person + Free Luggage
if payment by Citi Credit or Debit Cards!



©2023 Citibank Singapore Limited. All rights reserved. Citi, Citibank, Citi and Arc Design and other marks used herein are service marks of Citigroup Inc. or its affiliates, used and registered throughout the world. Citibank Singapore Limited Co. Reg. No. 200308485K.

JTB TRAVEL SALOON TAKASHIMAYA S.C. (TA 563)
#03-11C Ngee Ann City | Tel: 6595 0600
Mon - Sat 10.30 am to 8.00 pm • Sun & PH 10.30 am to 7.00 pm
Email: jtbtravelsaloon.sg@jtbap.com

SCAN FOR MORE
group tours, including this!



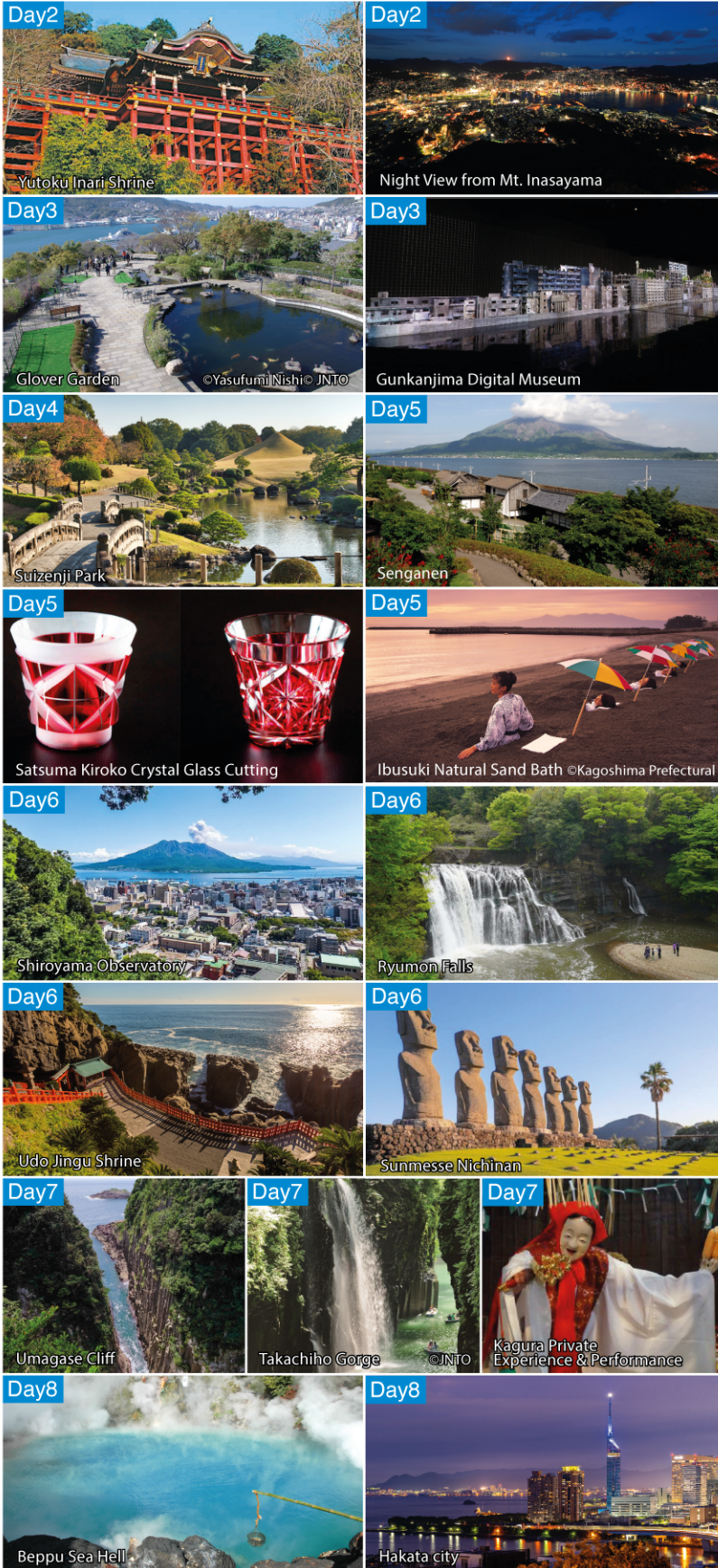


WINTER LUXURY GOURMET & ONSEN IN KYUSHU



Tour Code: FUKWL1123

HIGHLIGHTS



ITINERARY

- DAY1**
Assemble at Changi Airport for Check in
SQ656 SIN-FUK 0120-0810
- DAY2** Meal on Board / L / D
Fukuoka – Saga – Nagasaki
Inasayama Kanko Hotel or similar / Western room ♨️
• Yoshinogari Historical Park
• Yutoku Inari Shrine
• Mt. Inasayama Observatory
- DAY3** B / L / D
Nagasaki – Unzen
KAI Unzen / Iseya Obama Onsen or similar / Japanese / Western room ♨️
• National Peace Memorial Hall
• Glover Garden
• Gunkanjima Digital Museum
- DAY4** B / L / D
Unzen – Kumamoto
Kikunan Onsen Ubl Hotel or similar / Western room ♨️
• Ferry from Shimabara to Kumamoto
• Suzenji Park
• Kumamoto Castle
- DAY5** B / L / D
Kumamoto – Kagoshima – Ibusuki
Ibusuki Haku-suikan / Ibusuki Royal Hotel or similar / Western room ♨️
• Tsujunkyo Michi-no-eki
• Sengan-en Park
• Experience Satsuma Kiriko Crystal Cutting
• Ibusuki Sand Bath
- DAY6** B / L / D
Ibusuki – Kirishima – Miyazaki – Nango
Nichinan Kaigan Nango Prince Hotel / Sherotan Grande Ocean Resort Miyazaki or similar / Japanese room ♨️
• Shiroyama Observatory
• Ryumon Falls
• Udo Jingu Shrine
• Sun Messe Nichinan
- DAY7** B / L / D
Nango – Hyuga – Takachiho – Beppu
Beppu Onsen Suginoi or similar / Western room ♨️
• Umagase Cliff
• Takachiho Gorge
• Kagura Private Experience & Performance
- DAY8** B / L / -
Beppu – Oita – Fukuoka
Grand Hyatt Fukuoka or similar / Western room
• Beppu Jigoku Hell
• Dazaifu
• Hakata City
- DAY9**
Fukuoka – Singapore
SQ655 FUK-SIN 0945-1520
Arrive in Singapore

TERMS & CONDITIONS • The above tour package is subjected to change without prior notice • Minimum 15 persons are required to form a group • A tour manager will be with the group for the entire tour • Accommodation is based on twin-sharing basis • Package price does not include the associated taxes and fuel surcharges • Guide and driver service fee of JPY 1000 per person per day (adult/child) is applicable • Please approach our travel consultants for more details and other terms and conditions. NOTE • All the photos are for illustration purposes only • The itinerary is subject to change due to weather conditions • Meals indicated are for reference only and subject to change • Flight schedule is subject to change.