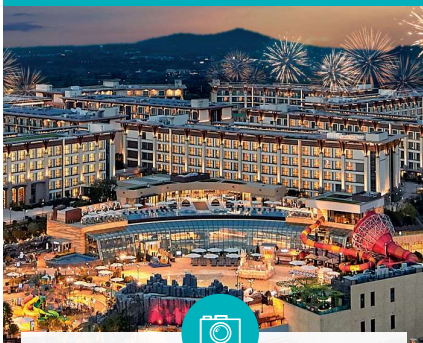


# 8D SNOW FUN IN KOREA + JEJU SHINHWA WORLD



## INCHEON / GANGHWADO ISLAND

- Ganghwa Sochang Experience Center (painting experience with sochang cotton)
- Ganhwa Seaside Luge

## GANGWON-DO

- Ski (Equipment and Attire are Included)
- Balwangsang Cable Car
- Everland

## JEJU ISLAND

- Seongsan Sunrise Peak
- Jeju Seongeup Folk Village
- Eco Land Theme Park
- Horse Riding
- Brick Campus
- Arte Museum
- Ark Church
- Daepo Jusangjeolli Cliff
- Tangerine Farm (Incl: picking tangerine, drink and alpaca feeding experience)

## SEOUL

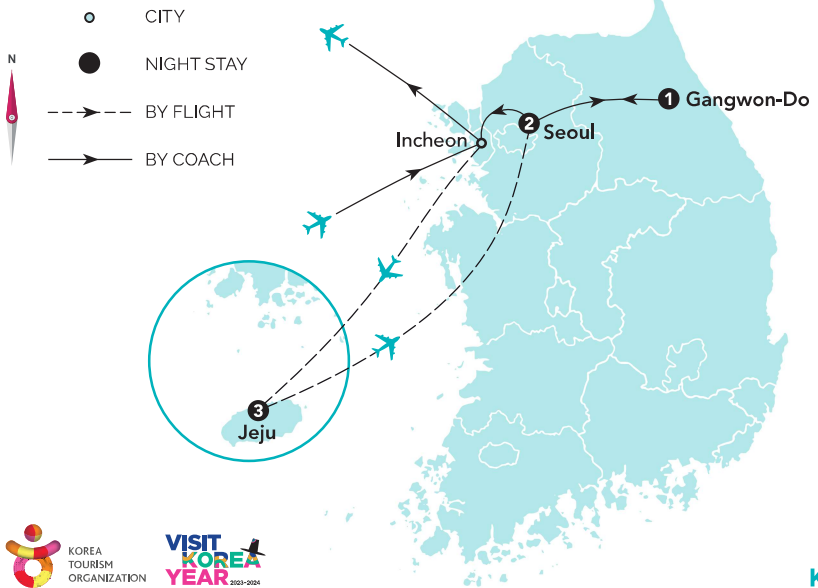
- Myeongdong shopping street
- The Painter's Hero Season II
- DIY Gimhap Experience



6 Breakfasts / 4 Lunches / 4 Dinners



5★ Hotel Stay + 1 Night @Ski Resort (Hotel or condominium)  
Exclusive ASA: 3N Shinhwa World Hotel



KOREA

### DAY 1 SINGAPORE → INCHEON

Assemble at Singapore Changi Airport and begin your holiday with a pleasant flight to Seoul.

Note: For flight Korean Air (KE) or Singapore Airlines (SQ) Morning Flight- upon arrival transfer to hotel for check in. You will enjoy an extra night's stay at the hotel.

### DAY 2 INCHEON - GANGHWA - GIMPO → JEJU

- Lunch: Ganghwa Famous Ginseng Chicken / Dinner: Abalone Hot Stone Bibimbop -

Upon arrival, meet and greet with our local representative. Proceed to **Ganghwa Sochang Experience Center**. It was once a Sochang fabric dyeing factory but is now a center where you can learn all about Sochang and **make your own handkerchiefs and wearing Hanbok experience** at here. Next to **Ganghwa Seaside Luge**. It also has Asia's largest luge track (1.8km/2 lines), allowing visitors to enjoy the thrilling experience of speeding down a hill. Then proceed to **Gimpo airport for your domestic flight to Jeju Island**. ASA exclusive arrangement to stay at the **Jeju 5★Shinhwa World Hotel for 3 nights**. It is the largest high-end hotel and resort in Jeju.

Note: In the event if due to on Monday, Sochang Experience Center will be replaced by Gimhap Experience Hanbok Wearing.

Hotel: 5★ Shinhwa World Hotel & Resort

### DAY 3 JEJU

- Hotel Breakfast / Lunch: Jeju Black Pork Soup / Dinner: Grilled Fish Set Menu -

This morning, proceed to **Seongsan Sunrise Peak**. It a UNESCO World Natural Heritage Site. Next to **Seongeup Folk village**. This traditional village offers a glimpse into the rich cultural heritage of the region. Thereafter proceed to **Eco Land Theme Park** and Enjoy nature-themed fun and attractions at Eco Land Them park in Jeju! Explore the scenic Gotjawal Forest via the forest train. Delight in the joy of **Horseback Riding** while exploring the scenic surroundings.

Hotel: 5★ Shinhwa World Hotel & Resort

### DAY 4 JEJU

- Hotel Breakfast / Lunch: Bomal Handmade Noodle / Dinner: 5★Jeju Shinhwa World Korean Cuisine (Jeju Sun) -

This morning, head to **Brick Campus**. It is the world's first block art museum and must be visited by Lego enthusiasts! Enjoy about 250 works by the best brick artists at home and abroad. Next to **Arte Museum** which is Korea's largest immersive media art exhibition organized by a world-class design company district, which is also well-known for the public media art "WAVE", presented at Coex. And explore the stunning architecture of **Ark Church** in Jeju Island. Discover the unique design and beautiful scenery of this iconic landmark. Thereafter, visit a natural wonder and a unique attraction on **Daepo Jusangjeolli Cliff**. Jusangjeolli is stone pillars piled up thousands of years ago when Hallasan Mountain was an active volcano. Experience tangerine picking at the **Tangerine Farm**. enjoy a drink at the



BALWANGSAN MOUNTAIN IN WINTER



EVELAND RESORT



PICKING ORANGES

café, and can feed alpacas, ponies and more (all included).

**Hotel: 5★ Shinhwa World Hotel & Resort**

**DAY 5  
JEJU → GIMPO - SEOUL -  
GANGWON-DO**

- Hotel Breakfast / Dinner: Korean BBQ Buffet -

This morning, have a fun time at **Everland Theme Park**. Korea's largest theme park. It offers a great number of rides and attractions for endless thrills and excitement. Of which, the most popular attractions/rides with generally the longest queueing time are T-Express, Lost World, Safari World, Amazon Express, Panda World and Snow Buster (winter only).

**Hotel: Mona Yongpyong Hotel & Resort/ Elysian Gangchon or Similar Hotel**

**DAY 6  
GANGWON-DO - SEOUL**

- Hotel Breakfast -

This morning, indulge in a host of fun snow activities, including ski suits and equipment. After then, enjoy a scenic **Cable Car Ride to Mount Balwang** where you can experience the skywalk. Take a panoramic gondola ride to admire the snowscape view from the peak.

Note: In the event if due to weather condition, cable car will be replaced by Water Park.

**Hotel: 5★ Novotel Ambassador Dongdaemun or Similar Hotel**

**DAY 7  
SEOUL**

- Hotel Breakfast / Lunch: Michelin restaurant satisfy Pork Knuckle Set -

After breakfast, proceed to the **Korean Ginseng Exhibition Hall**. Korean ginseng is a national treasure product of Korea. Koreans regard ginseng as the herb of immortality. You can see various Korean ginseng and ginseng products. Next to the **Korean Cosmetics Store**, you can learn how to care for your skin and buy cosmetics produced in South Korea. Enjoy more shopping sensations in **Myeongdong**, one of Seoul's main shopping and tourism districts. Conclude your day with **Painter's Hero Show Season II**. It is an innovative non-verbal performance that stages the entire process of painting combined with incredible visual effects and a witty blend of mime, dance and comedy.

**Hotel: 5★ Novotel Ambassador Dongdaemun or Similar Hotel**

**DAY 8  
SEOUL - INCHEON → SINGAPORE**

- Hotel Breakfast -

After breakfast, proceed to **Healthy Liver Showroom**, well known for its health products. Next to **DIY Gimhap Experience**. You will be transferred to the airport for your flight back to Singapore. We hope that you had a memorable vacation with ASA Holidays.

**Note:**

1. In the event of local religious festivals, unforeseen circumstances and/or bad weather conditions, the sequence of the itinerary may be changed or altered. Alternative attractions will be substituted without prior notice and/or at short notice in order to ensure a smoother journey and tour.
2. All bookings will be subject to the terms and conditions stipulated in this brochure.
3. Admission and entrance ticket will be included when specified.
4. Minimum group size of 16 passengers is required for a confirmed departure. Group size of 15 and below will solely be at the discretion of ASA Holidays and passengers need to accept the arrangement.
5. The tour is conducted in Mandarin.
6. All hotel ratings are based on local standards. In the event that accommodation in the stated hotel is unavailable, it will be replaced by another hotel of similar standards.
7. During major events, accommodation may not be in the city mentioned.
8. ASA Holidays recommends that you to buy travel insurance for your trip to ensure coverage.
9. All flights are subject to change without prior notice.
10. In the event of discrepancies between English and Chinese itinerary, please refer to the English version.
11. Room types are based on run of the house and allocated by respective hotels. ASA Holidays will not be responsible for the differences in the room allocated.
12. A levy of SGD250 or KRW250,000 will be collected from each passenger who leaves the tour group in Seoul.
13. For groups of 20 passengers and above, we will have a tour manager to accompany the tour throughout.